

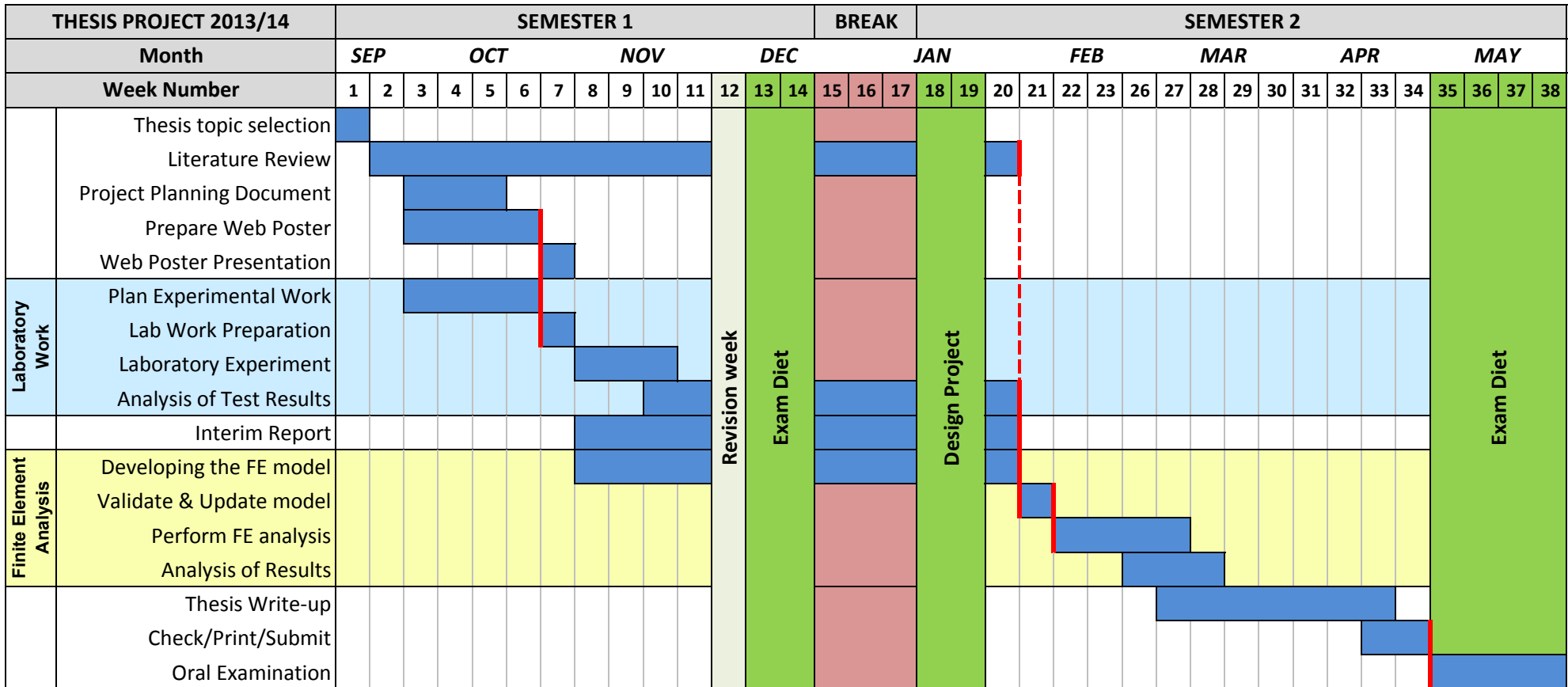
MEng Thesis Projects 2013/2014
Civil & Environmental Engineering
The University of Edinburgh



THE UNIVERSITY
of EDINBURGH

"How do warm temperatures affect a steel beam strengthened using CFRP?"

Project carried out by: Gary Snedden & Stefan Bozhkov
Thesis supervisor: Dr Tim Stratford



█ Red line denotes maximum end date of activity and indicates the critical path